

Hood River Forest Collaborative
REDHILL SITE VISIT & PROJECT REVIEW

September 29, 2016 – 9:00-3:00; group debrief @ 3:30 at Solera Brewery

Purpose of site visit and project review: To visit Red Hill Planning Area projects and compare/contrast Stew Crew recommendations with on the ground actions, short and long term impacts. This will help inform future recommendations, and to clarify individual and group social values, desired future conditions, and Zones of Agreement.

Definitions:

Desired Immediate Outcomes – Favorable near term impacts or effects – for example, thinning dense stand immediately lessens competition for nutrients.

Desired Future Conditions – Longer term, positive impacts or effects – for example, riparian planting to increase stream shading and decrease water temperatures.

Recommendations for the Red Hill Planning Area - November 2011

- 1. Plantation Thinning Recommendation:** Variable density thin from below with skips and gaps up to two acres. Base the prescription on function and structure of the stand and leave the best.

 - Improvements/Objectives: Scattered openings will foster elk grazing and disease reduction. Thinning will increase species diversity, reduce stress, insect and pathogen related mortality and increase structural diversity.
- 2. Riparian Enhancement Recommendation:** Some thinning in the Riparian reserve, but not in the true Riparian zone located directly adjacent to the water body. Some skips and no gaps within riparian reserve. Thinning in the riparian reserve should not increase water temperature or measured sedimentation.

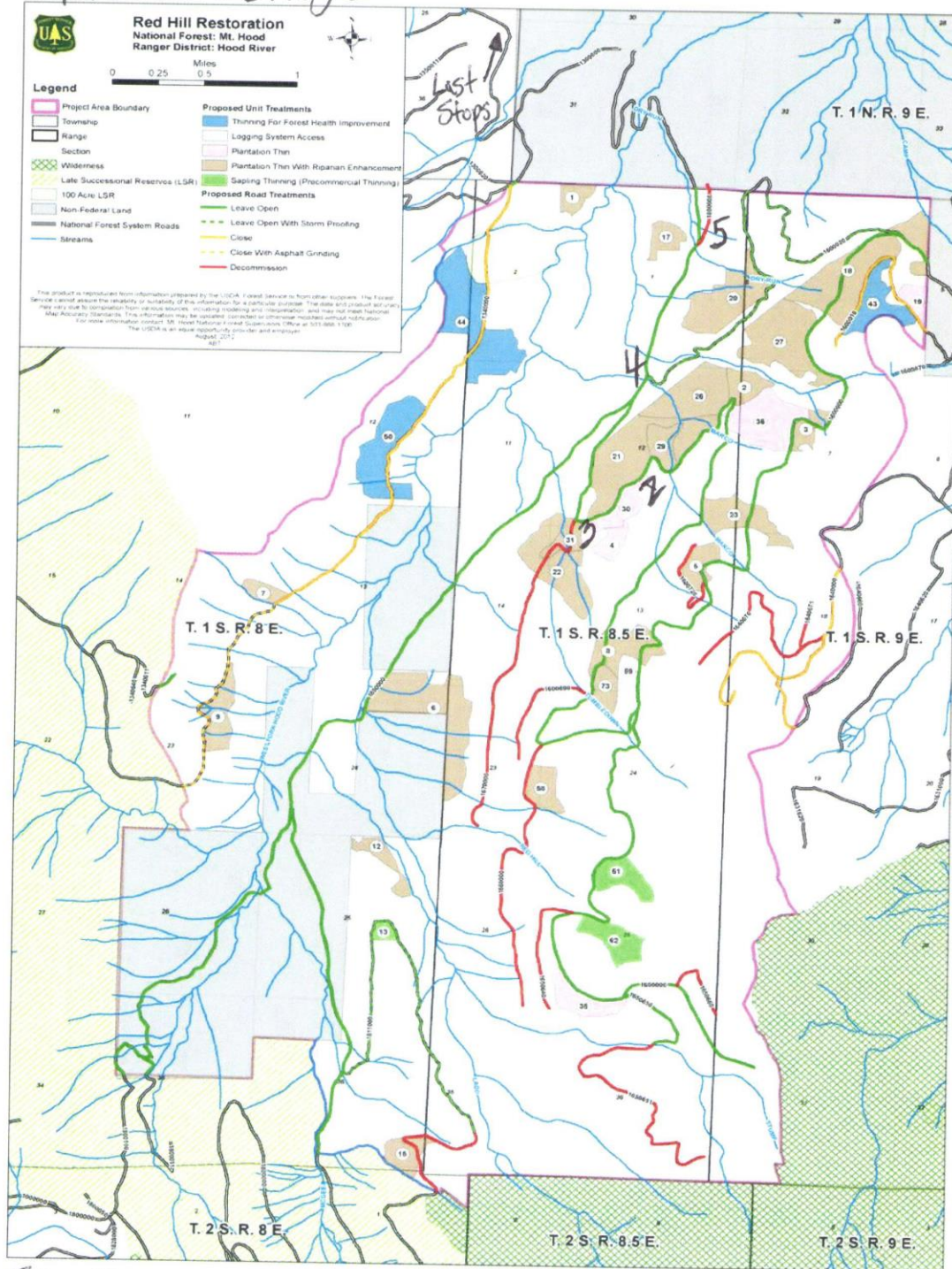
 - Improvements/Objectives: We also recommend opportunities for stream enhancement and restoration that create downed woody debris or planting for diversity. Fish habitat is improved. Plantation stands are disrupted to create more viable longterm forests and promote restoration of a large tree component. Reduction of Douglas fir monoculture. Funds are generated to support restoration activities.
- 3. Forest Health Treatment:** There was no agreement on a recommendation due to the lack of documented need for forest management in the units.
- 4. Huckleberry Enhancement Recommendation:** No agreement on the Forest Service proposed units. Instead, utilize unit 58 for Huckleberry Enhancement and thin to reduce shading of huckleberries. Look for opportunities in other plantation thinning units to implement similar Huckleberry Enhancements. Consider the blowdown potential when identifying other areas for enhancements. Monitor areas recently burned by the Dollar Lake fire to learn more about best practices for huckleberry establishment and management.

 - Improvements/Objectives: Greater huckleberry availability for tribal members. Better understanding of where and how huckleberries thrive.
- 5. Roads Recommendation:** For roads not projected to be used in the next 10 years, storm-proofing, at a minimum, should be used to improve hydrologic function and sight lines from major roads should be obliterated to minimize improper use.

 - Improvements/Objectives: Reduced erosion and improved water quality.
- 6. Final Recommendation:** Peer review after logging to see if objectives were met.

Stop 1: will be 1610 Rd. off Red Hill
 Stop 2: Bull-Bronco cable yarding
 Stop 3: New pipe Project.

APPENDIX 1: Selected Alternative
 Stop 4: New Bridge



Stop 5: storm proofed Rd.

Site 1 (name):

Observations – What do you notice about this site? What do you like/dislike about the conditions?

Desired Immediate Outcomes – What desired immediate outcomes do you see being met? (example: release of competition (light, nutrients, moisture, stress), decreased risk (fire, insects, disease, drought), new or restored habitat, different understory)

Desired Future Conditions – How is this site set up to meet your and/or the Stew Crew's desired future conditions? What do you think this site will look like in 3-5 years? Beyond that (50 years)?

Site 2 (name):

Observations – What do you notice about this site? What do you like/dislike about the conditions?

Desired Immediate Outcomes – What desired immediate outcomes do you see being met? (example: release of competition (light, moisture, stress), decreased risk (fire, insects, disease, drought), new or restored habitat, different understory)

Desired Future Conditions – How is this site set up to meet your and/or the Stew Crew's desired future conditions? What do you think this site will look like in 3-5 years? Beyond that?

Site 3 (name):

Observations – What do you notice about this site? What do you like/dislike about the conditions?

Desired Immediate Outcomes – What desired immediate outcomes do you see being met? (example: release of competition (light, moisture, stress), decreased risk (fire, insects, disease, drought), new or restored habitat, different understory)

Desired Future Conditions – How is this site set up to meet your and/or the Stew Crew's desired future conditions? What do you think this site will look like in 3-5 years? Beyond that?

Site 4 (name):

Observations – What do you notice about this site? What do you like/dislike about the conditions?

Desired Immediate Outcomes – What desired immediate outcomes do you see being met? (example: release of competition (light, moisture, stress), decreased risk (fire, insects, disease, drought), new or restored habitat, different understory)

Desired Future Conditions – How is this site set up to meet your and/or the Stew Crew's desired future conditions? What do you think this site will look like in 3-5 years? Beyond that?

Site 5 (name):

Observations – What do you notice about this site? What do you like/dislike about the conditions?

Desired Immediate Outcomes – What desired immediate outcomes do you see being met? (example: release of competition (light, moisture, stress), decreased risk (fire, insects, disease, drought), new or restored habitat, different understory)

Desired Future Conditions – How is this site set up to meet your and/or the Stew Crew's desired future conditions? What do you think this site will look like in 3-5 years? Beyond that?

Efficacy of Recommendations – Generally, do you feel the work done meets the recommendations of the collaborative? Did it go too far or not far enough towards the desired outcomes?

Additional thoughts, questions, concerns?